

## Protect your digital property in diverse environments and manage it under one domain

**SafeGuard Partner Connect** is a functional module of **SafeGuard Enterprise**, Utimaco's centralized solution for managing data security in mixed IT environments. It is centrally managed by the SafeGuard Management Center module which provides cross-platform administration and management of third-party endpoint security products such as **Windows Vista BitLocker™ Drive Encryption** clients, as well as devices protected by **SafeGuard Device Encryption** and **SafeGuard Data Exchange**.

### Windows Vista BitLocker Drive Encryption

**SafeGuard Partner Connect** provides integration with **Windows Vista BitLocker™ Drive Encryption**. BitLocker is a data protection feature available in Windows Vista Enterprise and Ultimate for client computers and in Windows Server 2008. It encrypts the entire Windows operating system volume on the hard disk, all user files and system files in the operating system volume, including the swap and hibernation files. BitLocker™ enhances data protection by integrating two major security features: drive encryption and the integrity checking of early boot components.

### SafeGuard Partner Connect unique benefits and flexible architecture include:

- Protection of company confidentiality with a flexible and easy-to-manage solution enforcing uniform data security policies
- Ease of administration with the help of the cross-platform management console
- Compliance assurance with centralized log reports for audit and legal requirements
- Full transparency of data protection across all parts of the enterprise infrastructure
- Automated and simplified BitLocker usage, key backup, and emergency mechanisms for easy recovery

Utimaco is a **Microsoft Gold Certified Partner** and a founding member of the **SecureIT Alliance**.



**SafeGuard Enterprise – Your Central Key to Information Protection**

## About Utimaco – The Data Security Company.

Utimaco is a leading global provider of data security solutions, enabling mid-to large-size organizations to safeguard their data assets against intentional or accidental data loss, and to comply with privacy laws. Utimaco's complete range of data security solutions provide full 360 degree data protection for data at rest, data in motion and data in use. Utimaco offers its customers comprehensive on-site support via a world-wide network of certified partners and subsidiaries. Utimaco Safeware AG, with headquarters in Oberursel, near Frankfurt, Germany, is listed on the Frankfurt Stock Exchange (ISIN DE0007572406). For more information please visit [www.utimaco.com](http://www.utimaco.com)

## Benefits

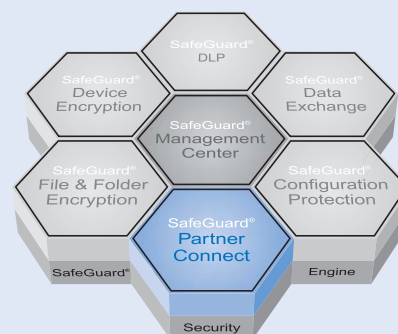
### Utimaco and Microsoft Advantage

- Support for Vista BitLocker ensures that enterprise customers can implement consistent security policies even in mixed OS (e.g. Vista, XP) and device environments (e.g. PC, hard disk, removable media)
- SafeGuard Enterprise utilizes Microsoft's enterprise products including: ActiveDirectory, SQL Server, Windows Server, and IIS
- SafeGuard Enterprise unifies key management tasks for BitLocker, removable media, and full disk encryption across platforms
- Eases regulatory compliance with comprehensive audit logs

### Utimaco, the leader in data security

- World-class products for centralized encryption and policy and key management for laptops, desktops & removable media
- Ease of use for end-users with transparent encryption means no change in work productivity
- Smooth integration into existing IT environments
- Unified console to manage multiple point solutions provided by common equipment and OS providers

## SafeGuard® Enterprise



### SafeGuard Partner Connect

is a module of **SafeGuard Enterprise** – a centralized solution for managing data security in mixed IT environments.



a member of the Sophos Group

# SafeGuard® Partner Connect

## System Requirements

### Operating systems

- Microsoft Windows Vista™ Enterprise or Ultimate editions with BitLocker Drive Encryption (Service Pack 1)

### Certifications

- FIPS 140-2



### Standards and Protocols

- Symmetrical encryption: AES 128 or 256 bit (with/without Diffuser)
- Asymmetrical encryption: RSA
- Hash functions: SHA-256, SHA-512
- Passwords, padding, PKCS #1, PKCS #5
- PKI: PKCS #7, PKCS #12, X.509 certificates
- Data transfer: SOAP, XML, SSL, LDAP
- Interoperability: TPM

### Multi-platform support

- Protects laptops, desktops, servers, removable media including USB sticks, memory cards, CD/DVDs, floppies\*
- Adding SafeGuard Device Encryption provides full-disk encryption on non-BitLocker enabled systems (e.g., Windows 2000, Windows XP or Windows Vista Business)
- Multi-platform key management and authentication

### Language versions

- English, French, German, Japanese
- Unicode-based support for local languages

### Logging and reporting

- Joint central logging repository for events created by BitLocker and non-BitLocker clients (administrator, user, device and other related events)

### Product Requirements

- SafeGuard Management Center

### Powerful central administration

- Connections to existing directories and domains
- Centrally enforced encryption rules
- Communication with SafeGuard Management Center via advanced XML/SOAP protocols

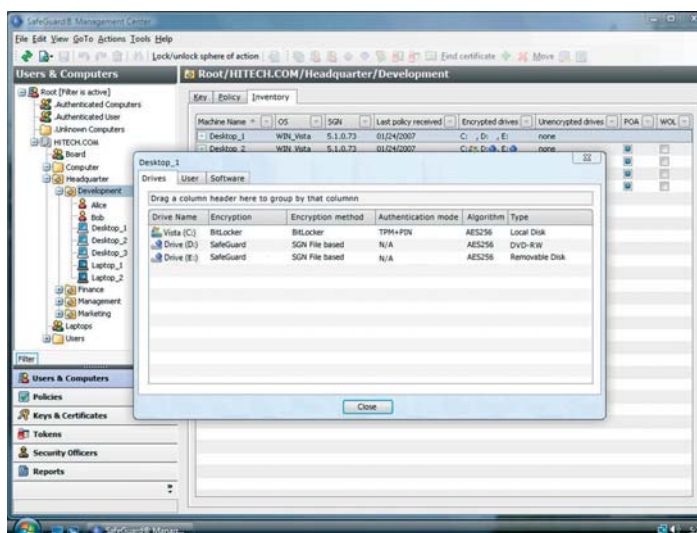
### Easy, centrally managed installation

- Installation packages can be distributed and installed centrally and unattended via standard MSI packages
- Easy roll-out over a network – without involving users

## Key Features/Functionality

### Full Support for Windows Vista™ BitLocker™

- Common security policies enforceable in mixed OS and device environments
- Centrally manage keys
- BitLocker™ Drive Encryption selectable as an option
- SafeGuard Enterprise reports on BitLocker device status



### Strong transparent encryption

- Extensive transparent encryption functionality
  - Partial or complete hard disk encryption regardless of file system (e.g., NTFS, FAT)
  - Multi-platform removable media encryption (e.g., floppies, USB drives, memory cards, CD-ROM/DVD-RW\*
- Strong, internationally recognized encryption algorithms
- Secure, encrypted hibernation and “Suspend to Disk” mode
- TPM chip used for random number generation and system start-up validation
- Encrypted data cannot be read even if hard drives are removed from the PCs, except by security administrators
- BitLocker pre-boot user authentication via password, USB memory token or TPM

### Greater productivity and ease of use

- Keyring allows sharing of encrypted media between organizational units\*
- High-speed encryption algorithms ensure no perceptible performance degradation
- Transparent background encryption, even during initial installation, ensures no work interruptions
- Quick and secure emergency procedure: recover forgotten passwords or from broken TPMs

### Further information

- For more information about Utimaco Safeware and our complete line of SafeGuard solutions, visit [www.utimaco.com](http://www.utimaco.com). To learn more about all of the modules that comprise SafeGuard Enterprise, visit [www.utimaco.com/sgn](http://www.utimaco.com/sgn)

### Utimaco Safeware Partner:

\*SafeGuard Data Exchange functionality

### Copyright Information

© 2007-2008 – Utimaco Safeware AG  
SafeGuard® Partner Connect version 5.35

All SafeGuard products are registered trademarks of Utimaco Safeware AG. All other named trademarks are trademarks of the particular copyright holder. Individual functions may have different characteristics according to the different capabilities of the operating systems.



a member of the Sophos Group

[www.utimaco.com](http://www.utimaco.com)

**EMEA**  
Utimaco Safeware AG  
Hohemarkstrasse 22  
DE-61440 Oberursel  
Germany  
Phone +49 (61 71) 88-14 44  
info@utimaco.com

**NORTH & SOUTH AMERICA**  
Utimaco Safeware Inc.  
10 Lincoln Road  
Foxboro, MA 02035  
USA  
Phone +1 (508) 543-10 08  
sales.us@utimaco.com

**ASIA PACIFIC**  
Utimaco Safeware Asia Ltd.  
Unit 602, Stanhope House  
734 King's Road, Quarry  
Bay  
Hong Kong  
Phone +85 225 20 26 08  
info@utimaco-asia.com

**JAPAN**  
Utimaco Safeware K.K.  
Nisso 16 Building, 3F  
3-8-8 Shin Yokohama, Kohoku-ku  
Yokohama 222-0033  
Japan  
Phone +81 (0) 45 470-1430  
info.jp@utimaco.jp