

Technical Spec / Laboratory Results



Cat6 UTP 350 MHZ, LSZH

X-219585-Y



Mechanical characteristics	Measure	Value
Cable type		4 * 2 * AWG 23
Conductor	mm	Ø 0,574 Bare copper
Insulation	mm	Ø 1,07 PE max.
Cable dimensions		
Simplex	mm	Ø 6,5 max.
Cable weight		
Simplex	kg/km	≈ 42
min bending radius		4 x cable diameter
Combustion energy		
Simplex	MJ/km	430

Cable sheath	
Colour:	white (similar to RAL 9010)
Material:	LSZH

Conductor colours	
white/blue, white/orange, white/green, white/brown	

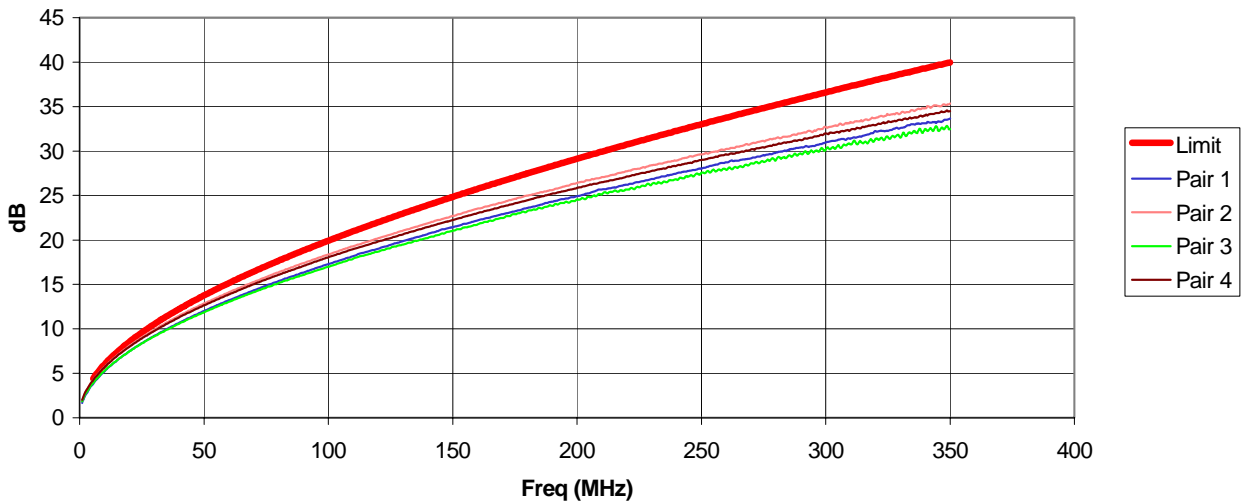
Typical Values											
Frequency	MHz	1	4	10	16	20	31,25	62,5	100	250	350
Attenuation	dB/100m	<1,9	<3,7	<5,9	<7,6	<8,5	<10,6	<15,2	<19,5	<32	<36
NEXT	dB	90	91	85	83	81	74	71	68	65	58
RL	dB	28	32	35	35	35	33	31	30	29	25
NVP	71 %										

Temperature range	Measure	Value
Operating temperature	°C	-20 ... +70
Installation Temperature	°C	±0 ... +50
Storage temperature	°C	-20 ... +70

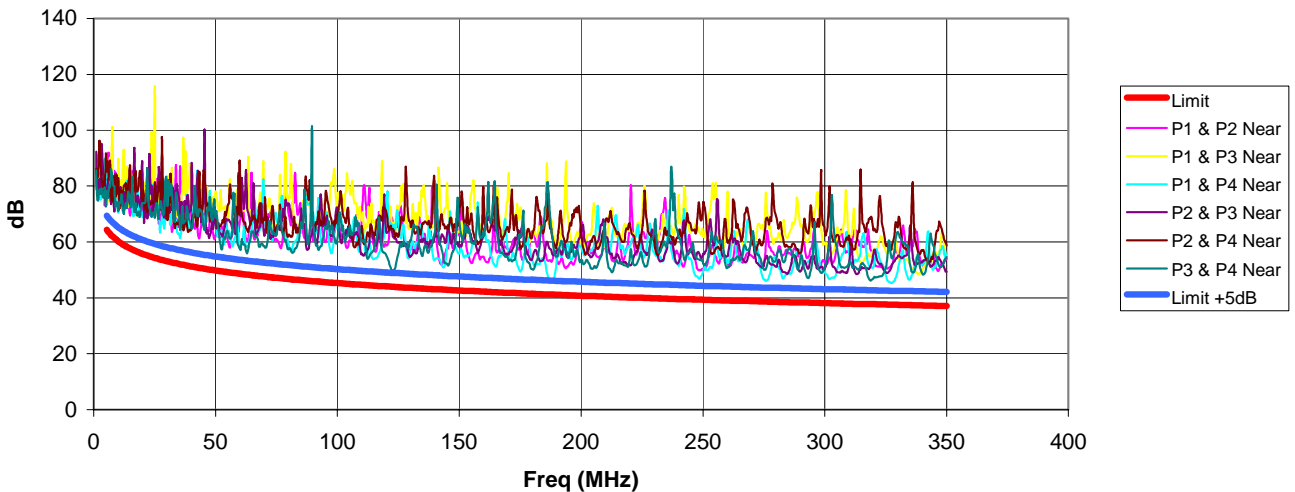


Laboratory Measurements for qualification:

SAMPLE
Insertion Loss



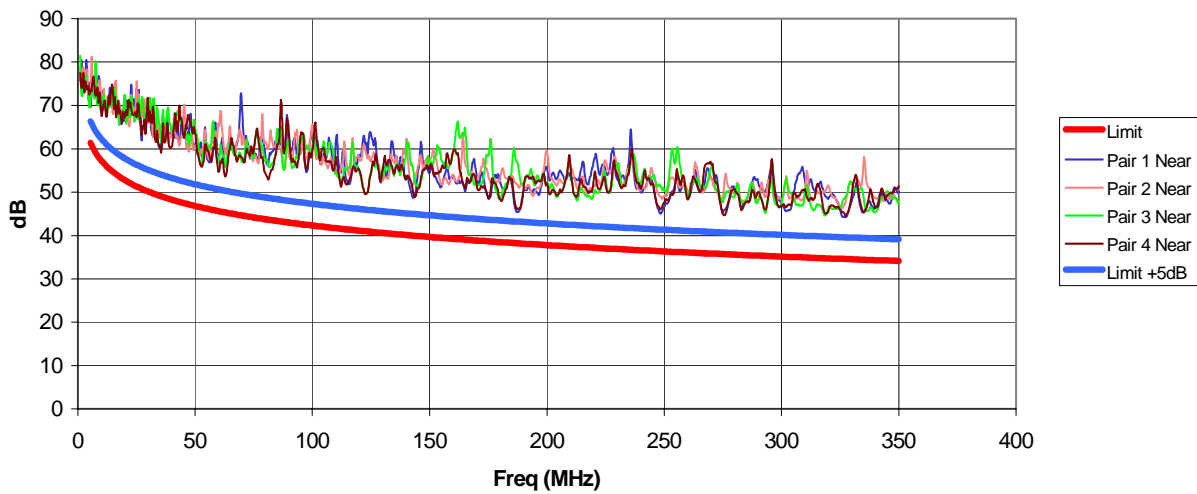
SAMPLE
NEXT Near End



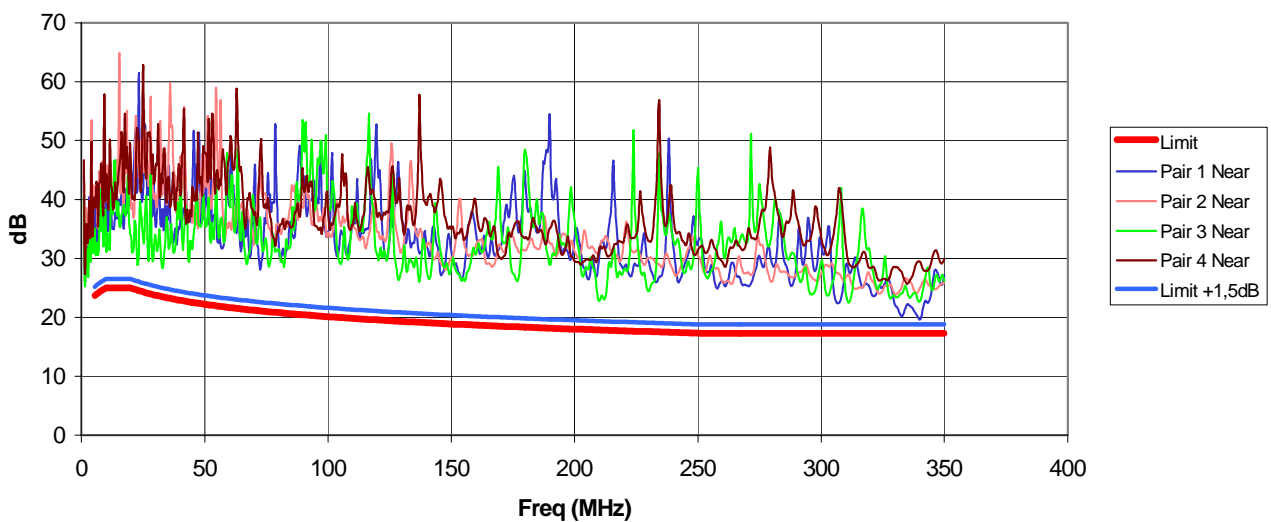


Laboratory Measurements for qualification:

SAMPLE
PS NEXT Near End



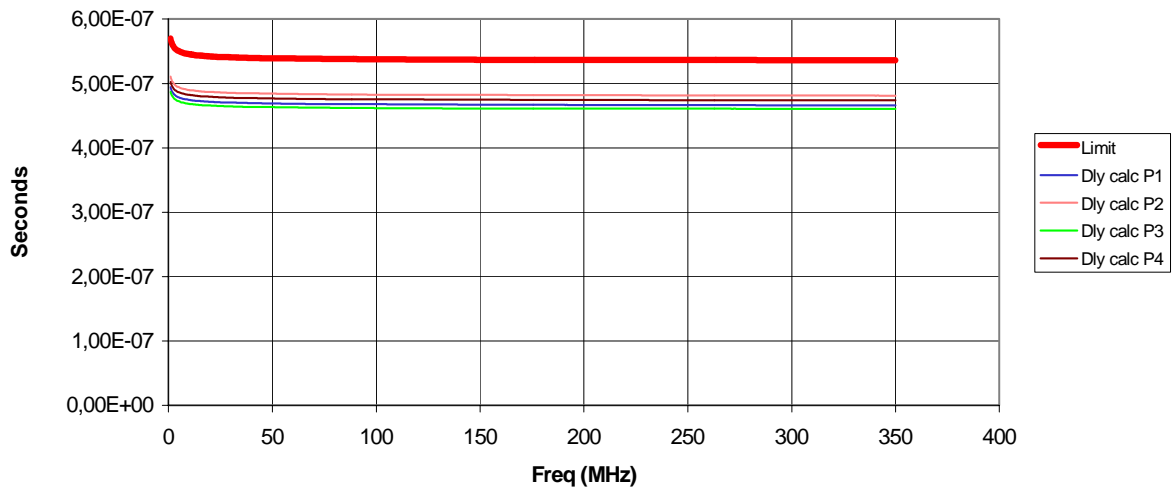
SAMPLE
Return Loss Near End





Laboratory Measurements for qualification:

SAMPLE
Propagation Delay



SAMPLE
Characteristic Impedance Near End

